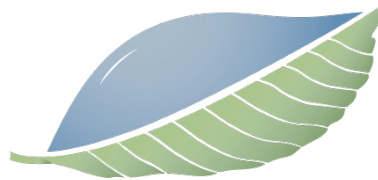


# SPECIFICATIONS PACKAGE

## CHAMPION PARK IMPROVEMENT PROJECT: PHASE ZERO

- BID PACKAGE SUBMITTAL-

*SPRING 2026*



# EQUINOX

EQUINOX ENVIRONMENTAL CONSULTATION AND DESIGN, INC.

14 O'Henry Ave, Suite 206, Asheville NC 28801

828.253.6856

[www.equinoxenvironmental.com](http://www.equinoxenvironmental.com)

**SPECIFICATIONS**

# TABLE OF CONTENTS

## SITE ELEMENTS

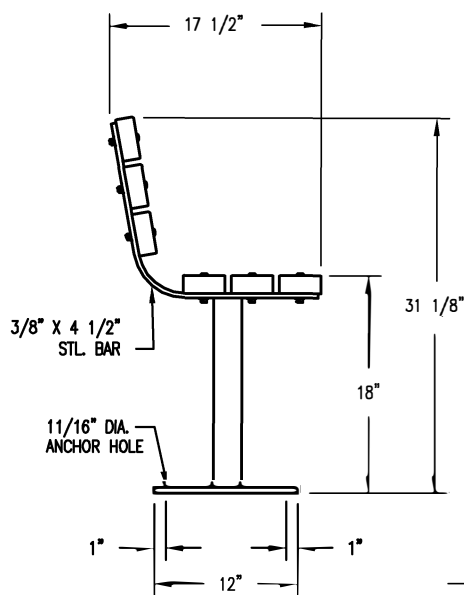
**Page 1 & 2...**      **Bench:** DuMor Bench 138 (or approved equal)

**Page 3 & 4...**      **Waste Receptacle:** DuMor Receptacle 41-32-PL (or approved equal)

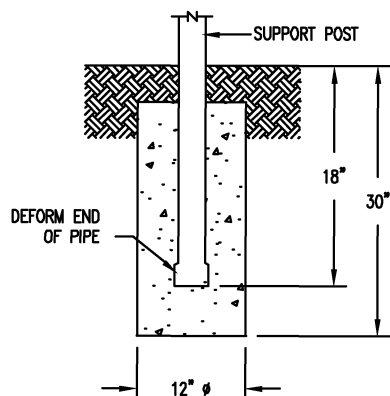
**Page 5...**      **Picnic Table:** Jamestown 6' Universal Access Picnic Table (or approved equal)

**Attachment 1:**      **Pavilion:** Cedar Forest Products 16x28, Low Pitch Beam (or approved equal)

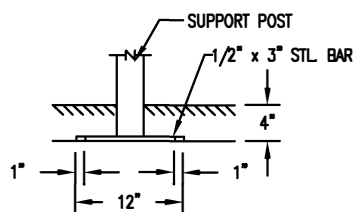
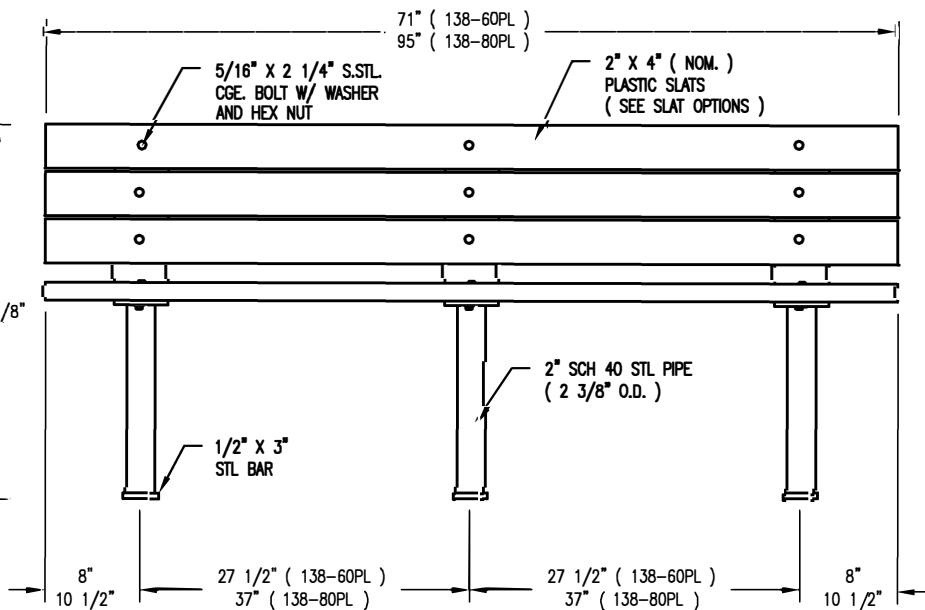
**Attachment 2:**      **Playground:** Kompan (or approved equal)



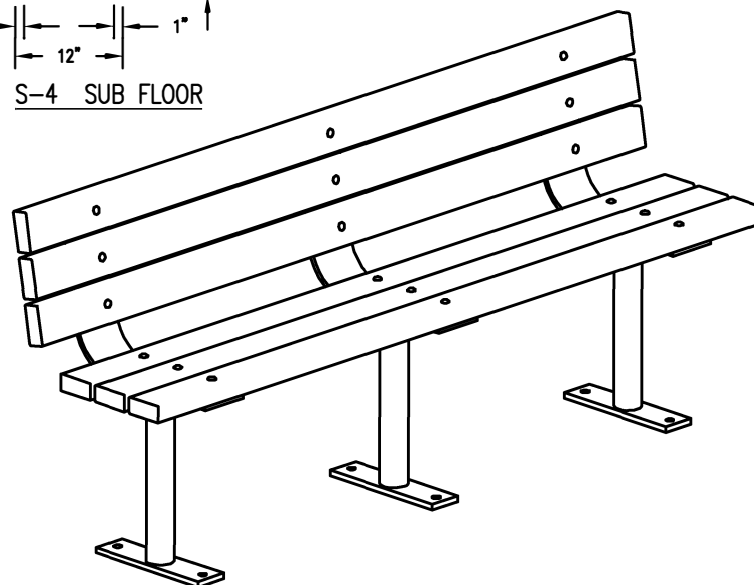
☐ S-2 SURFACE MT



☒ S-1 EMBEDMENT



☐ S-4 SUB FLOOR



#### LENGTH OPTIONS

- ☒ 6' BENCH  
☐ 8' BENCH

#### SLAT OPTIONS

- ☒ "CEDAR" RECYCLED PLASTIC  
☐ "GREY" RECYCLED PLASTIC  
☐ "REDWOOD" RECYCLED PLASTIC  
☐ "WALNUT" RECYCLED PLASTIC  
☐ OTHER \_\_\_\_\_

#### NOTES

- 1.) ALL STL. MEMBERS COATED W/ ZINC RICH EPOXY THEN FINISHED W/ POLYESTER POWDER COATING.
- 2.) 1/2" X 3 3/4" EXPANSION ANCHOR BOLT PROVIDED FOR S-2 & S-4 OPTIONS.



**DuMor, inc.**

P.O. Box 142 Mifflintown, PA 17059-0142

SCALE : NONE

DATE DRAWN : 9/20/01

DRAWN BY : AWH

DATE REV. : 10/25/11

REV. BY : RDH

TITLE :

BENCH

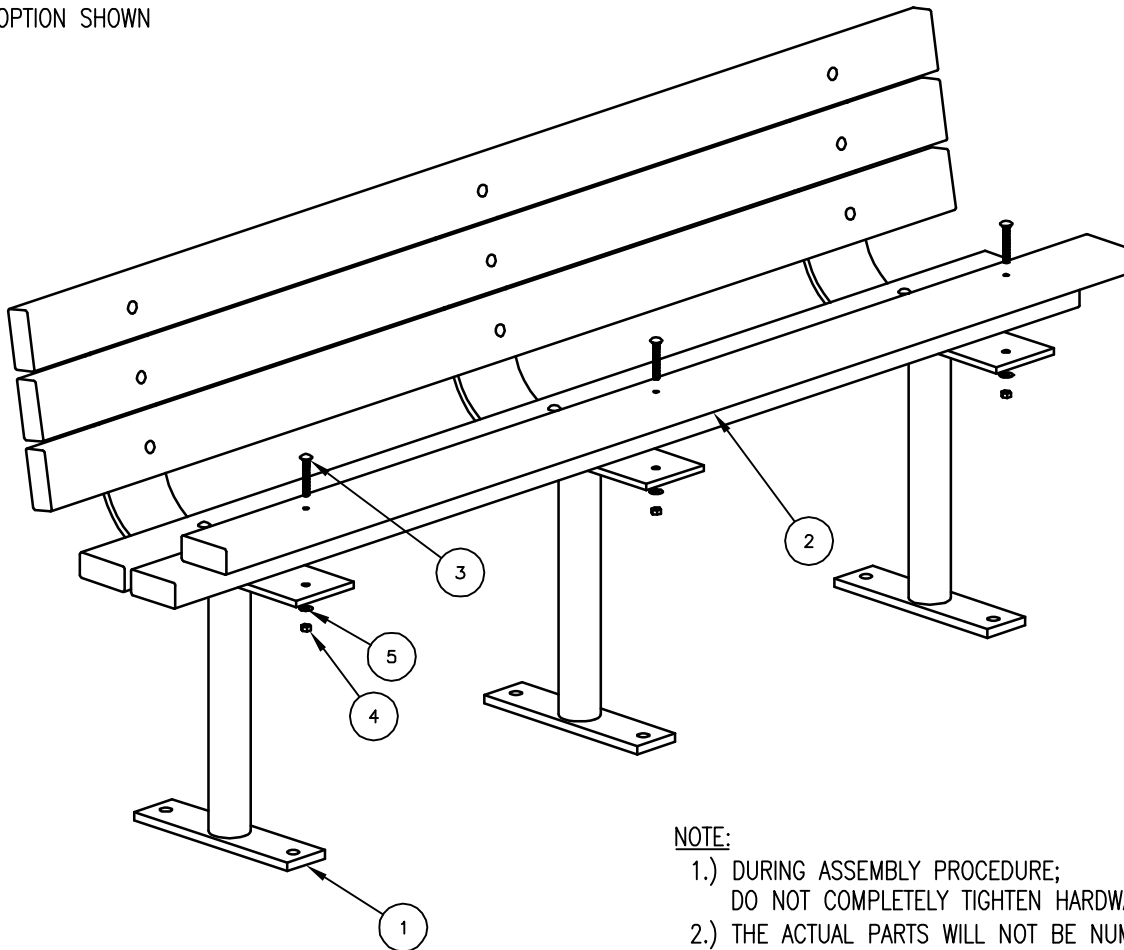
REV.  
C

DRAWING  
NUMBER

138 SERIES PL

SHEET  
1 OF 2

SURFACE MOUNT  
S-2 OPTION SHOWN



NOTE:

- 1.) DURING ASSEMBLY PROCEDURE;  
DO NOT COMPLETELY TIGHTEN HARDWARE.
- 2.) THE ACTUAL PARTS WILL NOT BE NUMBERED:  
NUMBERS ONLY APPLY TO DRAWING.
- 3.) SEE SPEC. SHEET 1 FOR MOUNTING OPTIONS.

STEP 1:

USE 3 - PC. SUPPORT POST ( 1 )  
 18 - PCS. 5/16" X 2 1/4" SS CGE BOLT ( 3 )  
 18 - PCS. 5/16" SS HEX NUT ( 4 )  
 18 - PCS. 5/16" SS FLAT WASHER ( 5 )  
 6 - PC. 2" X 4" X 71" PLASTIC SLAT ( 2 )  
 ATTACH ONE PLASTIC SLAT ( 2 ) TO THREE SUPPORT POSTS ( 1 )  
 USING HARDWARE ( 3, 4 & 5 ). TIGHTEN TO SNUG FIT. REPEAT  
 UNTIL ALL PLASTIC SLATS ARE ATTACHED TO SUPPORT POSTS.

STEP 2:

UPON COMPLETION OF BENCH ASSEMBLY SQUARE ALL COMPONENTS  
 THEN TIGHTEN ALL HARDWARE.

STEP 3:

ANCHOR ACCORDING TO SUPPORT OPTION USED.

ITEM	QTY	PART NO	DESCRIPTION
1	3	0-138-01/S-2	SUPPORT FOR SURFACE MOUNT
2	6	0-138-60PL-02	2" X 4" X 71" RECYCLED PLASTIC SLAT
3	18	1-11-062	5/16" X 2 1/4" SS CGE BOLT
4	18	1-21-015	5/16" SS HEX NUT
5	18	1-22-017	5/16" SS FLAT WASHER

  
**DuMor, inc.**  
 P.O. Box 142 Mifflintown, PA 17059-0142

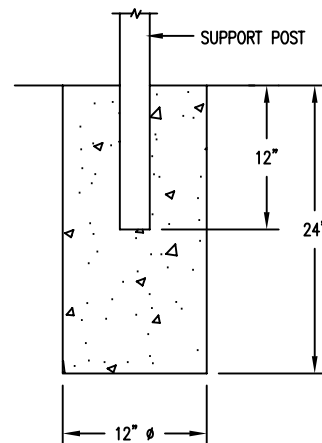
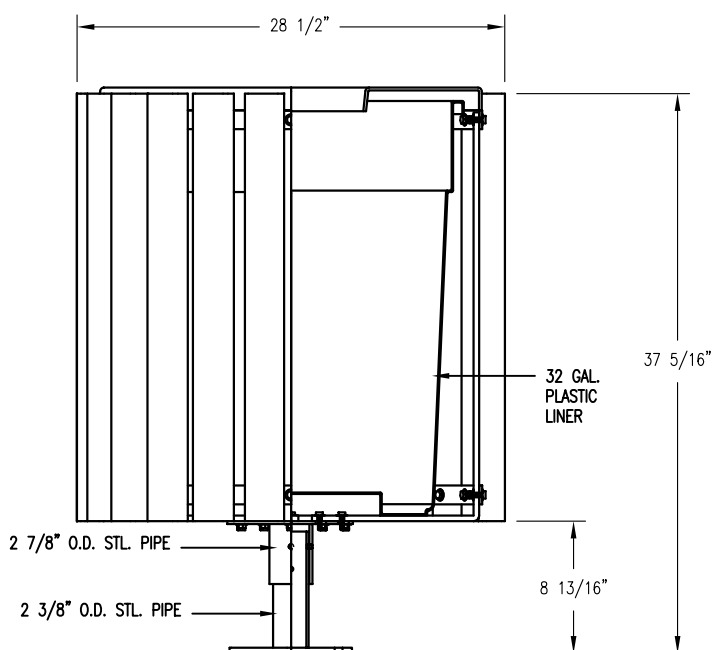
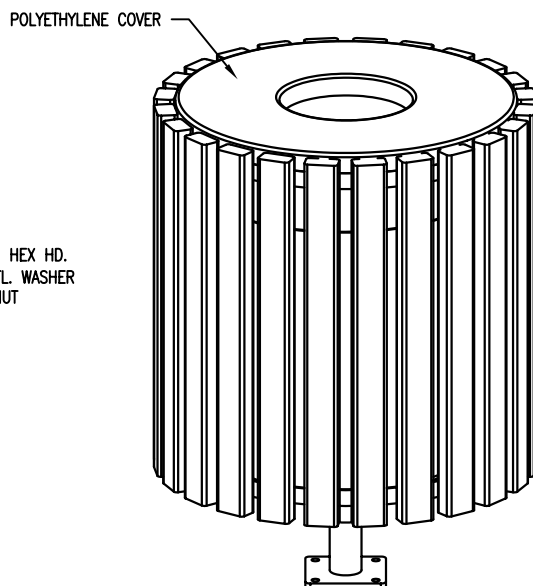
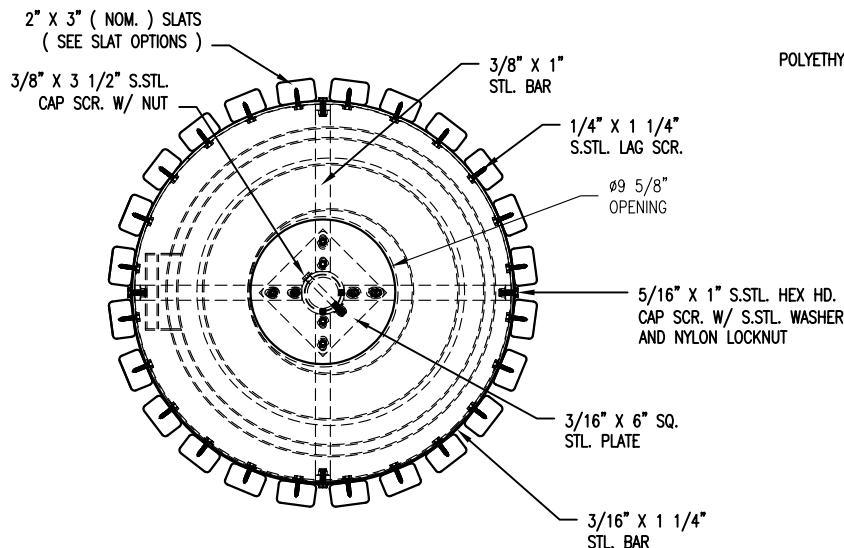
SCALE : NONE  
 DATE DRAWN : 9/20/01  
 DRAWN BY : AWH  
 DATE REV. : 10/25/11  
 REV. BY : RDH

TITLE : BENCH ASSEMBLY

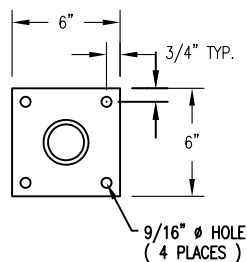
REV.  
C

DRAWING  
NUMBER 138 SERIES PL

SHEET  
2 OF 2



□ S-1 EMBEDMENT



✗ S-2 SURFACE

#### SLAT OPTIONS

- ✗ "CEDAR" RECYCLED PLASTIC
- "GREY" RECYCLED PLASTIC
- "REDWOOD" RECYCLED PLASTIC
- "WALNUT" RECYCLED PLASTIC
- OTHER \_\_\_\_\_

#### NOTES

- 1.) ALL STL. MEMBERS COATED W/ ZINC RICH EPOXY THEN FINISHED W/ BLACK POLYESTER POWDER COATING
- 2.) 1/2" X 3 3/4" EXPANSION ANCHOR BOLTS PROVIDED FOR S-2.

  
**DuMor, inc.**  
P.O. Box 142 Mifflintown, PA 17059-0142

SCALE : NONE  
DATE DRAWN : 7/17/03  
DRAWN BY : AH  
DATE REV. : 10/25/11  
REV. BY : ESS

TITLE :

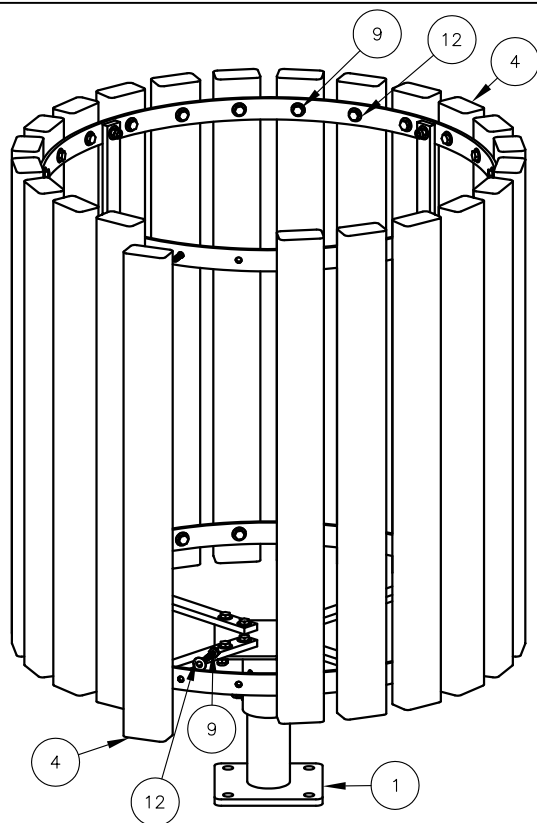
RECEPTACLE

REV.  
E

DRAWING  
NUMBER

41-32PL/46-00

SHEET  
1 OF 2



STEP 3

**NOTE:**

- 1.) DURING ASSEMBLY PROCEDURE:  
DO NOT COMPLETELY TIGHTEN HARDWARE.
- 2.) THE ACTUAL PARTS WILL NOT BE NUMBERED:  
NUMBERS ONLY APPLY TO DRAWING.
- 3.) SEE SPEC. SHEET 1 FOR MOUNTING OPTIONS.

**STEP 1:**

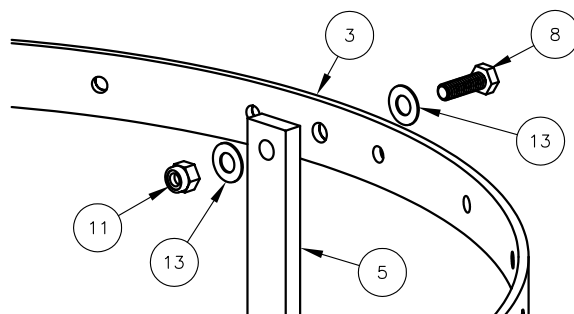
- USE 2 - PCS. HOOP FOR 30 GAL ( 3 )  
 4 - PCS. "L" SUPPORT STRAP FOR 30 GAL ( 5 )  
 8 - PCS. 5/16" X 1" SS. HEX HD. CAP SCR. ( 8 )  
 8 - PCS. 5/16" SS. NYLON LOCK NUT ( 11 )  
 16 - PCS. 5/16" SS. FLAT WASHER ( 13 )  
 ATTACH "L" SUPPORT STRAP ( 5 ) TO INSIDE HOOPS ( 3 ) USING  
 HARDWARE ( 8, 11, & 13 ). TIGHTEN TO SNUG FIT.  
 REPEAT UNTIL ALL "L" SUPPORT STRAPS ARE ATTACHED TO HOOPS.

**STEP 2:**

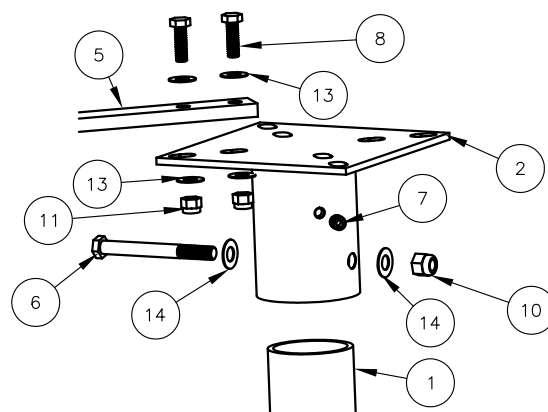
- USE 1 - PC. CENTER BRACKET ( 2 )  
 8 - PCS. 5/16" X 1" SS. HEX HD. CAP SCR. ( 8 )  
 8 - PCS. 5/16" SS. NYLON LOCK NUT ( 11 )  
 16 - PCS. 5/16" SS. FLAT WASHER ( 13 )  
 ATTACH CENTER BRACKET TO STEP 1 ASSEMBLY USING  
 HARDWARE ( 8, 11, & 13 ). TIGHTEN TO SNUG FIT.

**STEP 3:**

- USE 24 - PCS. 2" X 3" X 28 1/2" PLASTIC SLAT ( 4 )  
 48 - PCS. 1/4" X 1 1/4" SS. HEX HD. LAG SCR. ( 9 )  
 48 - PCS. 1/4" SS. FLAT WASHER ( 12 )  
 ATTACH 2" X 3" X 28 1/2" PLASTIC SLATS ( 4 ) TO STEP 2  
 ASSEMBLY USING HARDWARE ( 9 & 12 ). TIGHTEN  
 TO SNUG FIT. REPEAT UNTIL ALL SLATS ARE ATTACHED.



STEP 1



STEP 2 & STEP 5

**STEP 4:**

UPON COMPLETION OF BASKET ASSEMBLY SQUARE ALL  
COMPONENTS THEN TIGHTEN ALL HARDWARE.

**STEP 5:**

- USE 1 - PC. SUPPORT FOR SURFACE MOUNT ( 1 )  
 1 - PC. 3/8" X 3 1/2" SS. HEX HD. CAP SCR. ( 6 )  
 1 - PC. 3/8" SS. NYLON LOCK NUT ( 10 )  
 2 - PC. 3/8" SS. FLAT WASHER ( 14 )  
 2 - PCS. 3/8" X 3/8" SS. SKT. SET SCR. ( 7 )  
 ATTACH SURFACE MOUNT SUPPORT ( 1 ) TO STEP 4  
 ASSEMBLY USING HARDWARE ( 6, 10, 14, & 7 ) AND  
 TIGHTEN ALL HARDWARE.

**STEP 6:**

TO ATTACH COVER, REMOVE ONE 1/4" X 1 1/4" LAG SCREW  
AND FASTEN OPEN END OF CABLE TO BASKET USING  
THE LAG REMOVED.

**STEP 7:**

MOUNT AND ANCHOR AS SPECIFIED.

ITEM	QTY	PART NO	DESCRIPTION
1	1	0-41-00-03/S-2	SUPPORT FOR SURFACE MOUNT
2	1	0-41-00-04	CENTER BRACKET
3	2	0-41-30-01	HOOP FOR 30 GAL
4	24	0-41-30PL-06	2" X 3" X 28 1/2" PLASTIC SLAT
5	4	0-41-30-07	"L" SUPPORT STRAP FOR 30 GAL
6	1	1-12-034	3/8" X 3 1/2" SS HEX HD CAP SCR
7	2	1-12-054	3/8" X 3/8" SS SKT SET SCR
8	16	1-12-061	5/16" X 1" SS HEX HD CAP SCR
9	48	1-13-004	1/4" X 1 1/4" SS HEX HD LAG SCR
10	1	1-20-007	3/8" SS NYLON LOCKNUT
11	16	1-20-016	5/16" SS NYLON LOCKNUT
12	48	1-22-006	1/4" SS FLAT WASHER
13	32	1-22-017	5/16" SS FLAT WASHER
14	2	1-22-024	3/8" SS FLAT WASHER

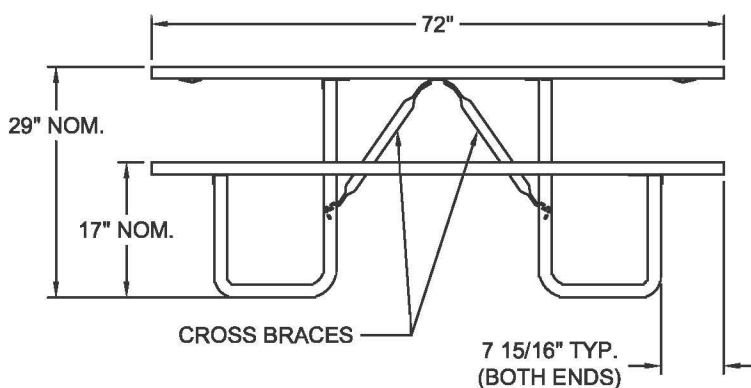
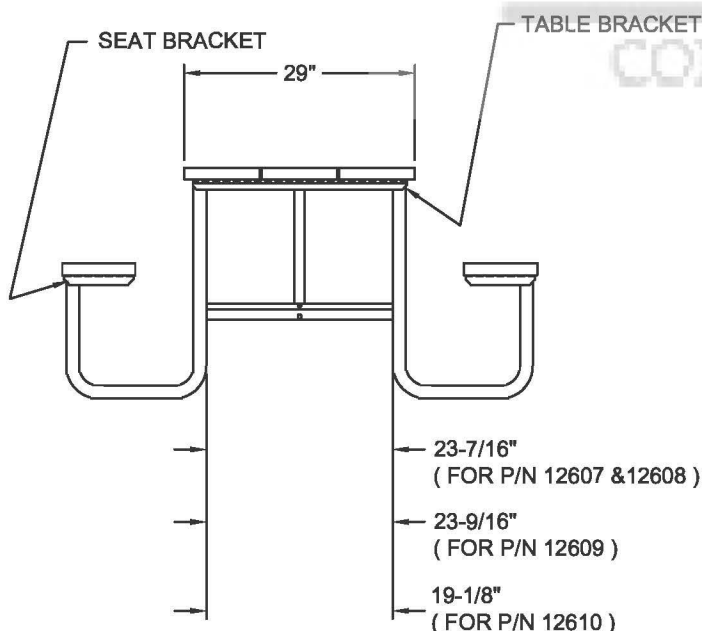
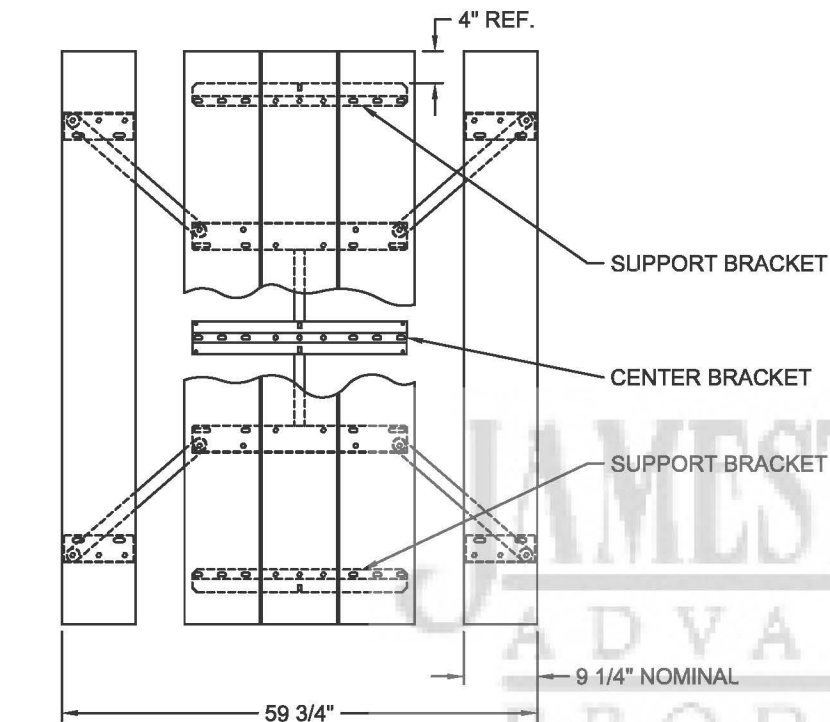
**DuMor, inc.**  
 P.O. Box 142 Mifflintown, PA 17059-0142

SCALE : NONE  
 DATE DRAWN : 7/17/03  
 DRAWN BY : AWH  
 DATE REV. : 12/17/09  
 REV. BY : AWH

TITLE : RECEPTACLE ASSEMBLY

REV. D  
 DRAWING NUMBER 41-32PL/46-00

SHEET  
2 OF 2



- Wheelchair accessibility at both ends.
- Seats are the same length as the table top, thus a benefit over the extended top design.
- Meets or exceeds current ADA guidelines for wheelchair access to picnic tables.
- The one-piece welded construction frames are fabricated using continuous MIG welds for strength.
- All pipe and tubing conform to ASTM A513-94, and all steel components conform to ASTM-A569.
- All cross braces are 1" schedule 40 pipe (.133" thk. wall).
- Center brackets are all 1/8" thk. (12 ga.) steel. Table and seat brackets are 1/8" thk. (12 ga.) steel for P/N's 12607, 12608 and 12609, and 3/16" thk. (7 ga.) steel for P/N 12610.
- Support brackets are 1/8" thk. (12 ga.) steel.
- Assembly fasteners are 3/8" dia. galvanized steel carriage bolts.
- Optional lumber is predrilled and has 3/8" radius rounded corners.
- All exposed corners are chamfered for safety.
- Approximate weights of tables less lumber:  
P/N 12607 = 80 lbs  
P/N 12608 = 65 lbs  
P/N 12609 = 55 lbs  
P/N 12610 = 100 lbs

CUSTOMER APPROVAL :

DATE :

**JAMESTOWN**  
ADVANCED  
PRODUCTS  
CORPORATION

THIS DRAWING, WHICH CONTAINS PROPRIETARY INFORMATION, IS THE PROPERTY OF JAMESTOWN ADVANCED PRODUCTS CORPORATION. IT SHALL NOT BE REPRODUCED IN ANY MANNER NOR DISCLOSED TO THIRD PARTIES WITHOUT WRITTEN PERMISSION OF JAMESTOWN ADVANCED PRODUCTS CORPORATION.

PRODUCT PART NUMBER : 12607, 08, 09 & 10  
(-1 THRU -6)

PRODUCT DESCRIPTION :  
6' UNIVERSAL ACCESS PICNIC TABLE

DATE : 09-08-06

REV. NO. 1

2855 GIRTS ROAD  
JAMESTOWN, NY 14701

PHONE 800-452-0639 -- FAX 716-483-5398 -- WWW.JAMESTOWNADVANCED.COM