



LAND of SKY

REGIONAL COUNCIL

Who We Are



Who We Are: Land of Sky Regional Council is a multi-county local government planning and development organization. We reach across county and municipal boundaries providing technical assistance to local governments and administer projects and programs which benefit our region's citizens.

Our Mission: Our mission is to provide creative regional solutions to relevant and emerging issues in Buncombe, Henderson, Madison, and Transylvania counties while providing a standard of excellence in the delivery of federal, state, and regional services for our member communities.

What We Offer: Land of Sky Regional Council offers services and programs through the following departments:

- Economic & Community Development
- Mountain Area Workforce Development & P20 Council
- Transportation Resource Center
- Area Agency on Aging
- Client Services
- Regional Transportation Planning

Our Commitment:

- We value cultural, gender, racial and ethnic diversity
- We believe diversity and inclusion make us stronger
- We will treat all people with dignity, respect and compassion to foster a trusting and supportive working environment
- We will be honest, open and clear in our communication with our co-workers, member governments, funders, clients and our region
- We will respect diversity of opinion
- We are committed to a culture of personal responsibility with an appreciation for risk taking
- We will hold ourselves accountable to our co-workers, member governments, funders, clients and our region
- We will develop and implement policies and procedures that are fair, consistent and equitable.

Contact: For questions and general inquiries about Land of Sky, please contact:



Nathan Ramsey
Executive Director
nathan@landofsky.org
828.251.6622 (x1105)



Erica Anderson
Deputy Executive Director
erica@landofsky.org
828.251.6622 (x1123)



Creative Regional Solutions

Land of Sky is the local economic development district for our region, providing access to a wide variety of expertise, partnerships, and funding streams. Current efforts are focused on greater regional cooperation in the areas of job creation, job retention, quality of place, entrepreneurship, and economic competitiveness. Professionally trained and experienced staff diligently strives to improve economic, environmental, and social conditions in every program area and project. Services available to local governments and communities include quality facilitation, grant writing and contract management, project administration, data management and analysis, policy research and development, education, training and contract services.

Broadband:	Supports and administers programs and initiatives	Contact: Sara Nichols
Community Services:	Land Use, Parks & Recreation, Contracting Services, Zoning, and Asset Inventory	Contact: Mary Roderick
Economic Development:	Supports and staffs various economic development efforts to carry out the mission as the region's Lead Economic Development Organization as designated by the Economic Development Administration and Appalachian Regional Commission.	Contact: Erica Anderson
Energy & Environment:	Supports and administers programs and initiatives for energy and environment. Projects include, but are not limited to, Clean Vehicles Coalition and Clean Air Campaign.	Contact: Sara Nichols
Foreign Trade Zone:	Supports approved businesses to lower / eliminate / defer duties and provide benefits to companies operating in the U.S.	Contact: Erica Anderson
French Broad River MPO:	French Broad River Metropolitan Planning Organization (MPO) – responsible for carrying out continuing, cooperative, and comprehensive multi-modal transportation planning in the Asheville Urbanized Area which includes portions of Buncombe, Haywood, Henderson, and Madison counties.	Contact: Tristan Winkler
GIS & Technical Services:	Supports internal programs and local governments – includes map production, GIS training, transportation mapping, data management, and demographic analysis.	Contact: Jon Beck

Housing:	Works directly with local governments, non-profits, and developers to enhance housing availability, and access in the region.	Contact: Mary Roderick
Infrastructure:	Supports and administers community infrastructure and local development initiatives such as water, wastewater, and access roads.	Contact: Erica Anderson
Land Use:	Provides technical assistance and contract services for projects such as land use plans, small area plans, ordinance revisions, and community visioning, and zoning and code administrators	Contact: Mary Roderick
Land of Sky RPO:	Land of Sky Rural Planning Organization (RPO) – a voluntary organization of local governments working cooperatively with the NC Department of Transportation and local officials to enhance transportation planning opportunities for rural areas in Buncombe, Haywood, Madison, and Transylvania counties	Contact: Vicki Eastland
Regional Brownfield Initiative:	Provides local governments, non-profits, and private developers with economic development technical assistance and grant writing services to assess and remediate underused, abandoned or vacant properties which have not been redeveloped due to real or perceived contamination.	Contact: Erica Anderson
Waste Reduction Partners:	A team of retired engineers who assist businesses and institutions with waste, water, and energy reduction assessments and utility cost-saving strategies.	Contact: Terry Albrecht

Contact: For questions and inquiries about our Economic & Community Development menu of services, please contact:



Erica Anderson
 Economic & Community Development Director
 erica@landofsky.org
 828.251.6622 (x1123)

Economic & Community Development Staff



Mary Roderick
Planning Director
mary@landofsky.org
828.251.7444



Sara Nichols
Energy & Economic
Development Manager
sara@landofsky.org
828.251.6622 (x1130)



Ian Baillie
Regional Planner
ian@landofsky.org
828.251.7453



Jessika Bond
Regional Planner
jessika@landofsky.org
828.273-8826



Kayla DiCristina
Regional Planner
kayla@landofsky.org
828.251.7452



Kaitland Finkle
Regional Planner
kaitland@landofsky.org
828.251.7428



Erin Hughes
Resilience Project
Coordinator
erin@landofsky.org



Anna Lloyd
Lead Fellow for NC
anna@landofsky.org
828.785.2531



Paul Moon
Regional Planner
paul@landofsky.org
828.470.0075



Kelsey Owle
Community Engagement
Liaison
kelsey@landofsky.org



Nicole Samu
GIS Coordinator
nicole@landofsky.org
828.251.7445



Traci Thompson
 Regional Planner
 traci@landofsky.org
 828.785.2531

Regional Transportation Planning



Vicki Eastland
 Assistant Transportation
 Planning Director, LOSRPO
 vicki.eastland@landofsky.org
 828.251.7451



Tristan Winkler
 Transportation Planning
 Director, FBRMPO
 tristan@landofsky.org
 828.251.7454



Hannah Bagli
 Transportation Planner,
 FBRMPO
 hannah@landofsky.org
 828.251.7452



Jon Barsanti
 TDM Coordinator
 jb2@landofsky.org
 828.470.0232



Abigail Incze
 Transit Grant Administrator
 abigail@landofsky.org
 828.251.7428



Daisy O'Conner
 Transportation Planner,
 FBRMPO
 daisy@landofsky.org
 828.251.7449



Ada Sloop
 Regional Safe Routes to
 School Coordinator
 @landofsky.org
 828.251.7447



Vacant
 Transportation Planner
 @landofsky.org
 828

Waste Reduction Partners



Terry Albrecht, NCDEQ*
WRP Director
terry@landofsky.org
828.251.6622 (x1163)



Irena Rado
WRP Office Manager
IRado@wrpnc.org
828.251.6622 (x1164)



Jan Hardin
Solid Waste Manager
JHardin@wrpnc.org
828.553.3530



Tom Kimmell
Waste Program Manager
TKimmell@wrpnc.org
828.251.7491



Kimberly Van Niekerk
Energy Program Manager
kvanniekerk@wrpnc.org
828.251.7477



Developing a Proficient Workforce

Land of Sky's Mountain Area Workforce Development (MAWD) designs and implements a strategic plan to meet the needs of the region's businesses for a skilled, reliable and proficient workforce; and meets the skill development and job acquisition needs of the region's jobseekers. MAWD is engaged in public/private partnerships that respond to emerging workforce issues and economic development opportunities.

Employers:

Offers many services to businesses through the NC Works system to address the workforce needs of the region's employers. Programs include Incumbent Workforce Development Training Program and On-the-Job Training.

Contact: Barbara Darby

Job Seekers:

NC Works Career Centers assist job seekers in every step of the job search process. They provide a number of services and referrals at no charge to help you find a job.

Contact: Zia Rifkin

Youth:

The WIOA Youth Program, NEXTGEN, provides training and development services to eligible individuals ages 16-24. The major focus of the program is to connect in-school and out-of-school youth to career readiness, career guidance, remediation, community resources and employment and training opportunities.

Contact: Brandon Priester

Contact:

For questions and inquiries about our Mountain Area Workforce Development menu of services, please contact:



Nathan Ramsey
MAWD Director
nathan@landofsky.org
828.251.7473



Barbara Darby
Assistant Workforce Director /
Regional Business Services Leader
barbarad@landofsky.org
828.231.6611

Mountain Area Workforce Development Board Staff



Wendy Manson
Work-Based Learning
Coordinator
wendy@landofsky.org



Brandon Priester
Business Services
Representative, Youth
brandonp@landofsky.org
828.575.4627



Zia Rifkin
Workforce Finance Manager
zia@landofsky.org
828.251.6622 (x1141)



Melissa Wright
Workforce Operations
Director
melissa@landofsky.org
828.251.6622 (x1140)



Vacant
Business Services
Representative
@landofsky.org
828.



Partnerships from
Pre-K to Post-Grad

P20 Council Staff

Fill the 10K Workforce Gap by 2030

The Land of Sky P20 Council fosters collaboration among employers, educators, and community members in the spirit of enduring economic prosperity, through the alignment of innovative cradle-to-career skills and resources that lead to life-sustaining job opportunities in our four county region of western North Carolina.



Emily Nicholson
P20 Council Executive
Director
emilyn@landofsky.org
828.551.2290



Melissa Zenz
Community
Engagement & Data
Management Specialist
melissaz@landofsky.org
828.772.5380



Katlen Smith
Administrative Support
Specialist
katlen@landofsky.org
303.669.5461

LANDofSKY
TRANSPORTATION
RESOURCE CENTER

Providing Transportation Options

Land of Sky's Transportation Resource Center handles the administration of Mountain Mobility and Non-Emergency Medicaid Transportation for Buncombe County. Mountain Mobility provides transportation services to clients of human service agencies, local governments, and qualified citizens. NEMT provides transportation services for qualified clients.

Mountain Mobility:

Through a contract with Buncombe County, Land of Sky manages the administrative functions of Mountain Mobility, Buncombe County's community public transportation system. Mountain Mobility provides transportation services to clients of human service agencies, local governments, and qualified citizens who reside in the Buncombe County service area.

Contact: Vicki Jennings

Non-Emergency Medicaid Transportation:

When a Medicaid beneficiary has access to a suitable mode of transportation, but lacks the means to use it, the county must assist with the means through gas vouchers, mileage reimbursement, etc. or when the beneficiary lacks both means and mode, the county is responsible for arranging transportation at a cost within allowable Medicaid regulations.

Contact: Glenda Brown

Land of Sky's Transportation Resource Center has collaborated with Buncombe County DHHS to arrange and approve Non-Emergency Medicaid Transportation (NEMT) to Medicaid beneficiaries in Buncombe County for their necessary health care needs.

Contact: For questions and inquiries about our Transportation Resource Center menu of services, please contact:



Vicki Jennings
Strategic Initiatives Director
vicki@landofsky.org
828.251.6622 (x1116)



Glenda Brown
NEMT Manager
glenda@landofsky.org
828.552.5486

Transportation Resource Center Staff



Diana Boone
NEMT Specialist
diana@landofsky.org
828.552.5486 (x4)



Tanya Carver
NEMT Specialist
tanya@landofsky.org
828.552.5486 (x2)



Samantha Case
Mountain Mobility
Transportation Specialist
samantha@landofsky.org
828.251.6622 (x1114)



LeChelle Fore
NEMT Specialist
lechelle@landofsky.org
828.552.5486 (x1)



Charlie Lee
Mountain Mobility
Transportation Specialist
charlie@landofsky.org
828.251.6622 (x1114)



Heather Roberts-VanSickle
Mountain Mobility
Transportation Specialist
heather@landofsky.org
828.251.6622 (x1314)



Aging in Place

Land of Sky's Area Agency on Aging is a leader and catalyst in helping older adults in our four county region lead more independent, vibrant lives. Part of a national network of aging agencies established by the Older Americans Act, we work to strengthen home and community care for older adults.

Long Term Care Ombudsmen:

Serves as advocates for residents' rights and are responsible for investigating complaints made by or on behalf of, nursing and adult care home residents. They work with residents, family members, concerned citizens, and facilities, as well as public and private agencies to enhance the quality of care and life for residents in long term care facilities.

Contact: Cori Search
Donna Thomason
Donna Case

Family Caregiver Support Program:

Provides information, assistance and support to family members and friends who are caring for a frail elderly person or someone with Alzheimer's disease or another type of dementia. Grandparents and older relatives age 55 and older who are raising a child are also eligible for assistance. Counseling, support groups, education, and respite are also offered.

Contact: Edward Jones

Project C.A.R.E. (Caregiver Alternatives to Running on Empty):

Assists caregivers of people with dementia by providing information, assistance and referral services as well as care consultation and respite funding to eligible caregivers.

Contact: Nancy Hogan

Foster Grandparent Program:

Provides opportunities for seniors to impact the lives of children in their community. Foster Grandparents serve as mentors, tutors, and loving caregivers to children and youth with special needs. They also help children develop the skills, confidence and strength to succeed in life.

Contact: Stacy Friesland

Senior Companion Program:

Provides opportunities for seniors age 55+ to make a difference in their communities. Volunteers provide support services to older persons aging in place including transportation, socialization, and respite.

Contact: Dee Heinmuller

Health Promotion & Disease Prevention:

Assists in the coordination, development and administration of health promotion and disease prevention initiatives. The purpose of this service is to support older adults in maintaining optimal physical, mental and emotional health. This includes physical activity, and Evidence Based Health Promotion Programs.

Contact: Brea Kuykendall

Senior Tar Heel Legislature:

Provides information to senior citizens on the legislative process and matters being considered by the North Carolina General Assembly. Promotes citizen involvement and advocacy concerning aging issues before the North Carolina General Assembly. Assesses the legislative needs of older citizens by convening a forum modeled after the North Carolina General Assembly.

Contact: LeeAnne Tucker

Home & Community Care Block Grant:

HCCBG services are provided by local agencies within the community and are available to people ages 60 and older who are socially and economically needy. Responsible for contracting, monitoring, and providing administrative and ARMS support.

Contact: Zack Schmitt

Money Follows the Person:

Assists people with chronic conditions and disabilities as they move from institutions back into the community using community-based services and support. The program also provides education, outreach, and support to increase awareness and utilization of the program.

Contact: Ginger Hill
Kathryn Florack
Carol Allison

Contact:

For questions and inquiries about our Area Agency on Aging menu of services, please contact:



LeeAnne Tucker

Area Agency on Aging Director
leeanne@landofsky.org
828.251.6622 (x1115)

Area Agency on Aging Staff



Carol Allison
MFP Community Inclusion
Specialist
carola@landofsky.org
828.



Vicki Benavides
Transportation Planner
hannah@landofsky.org
828.251.7452



Donna Case
Regional Planner
ian@landofsky.org
828.251.7453



Kathryn Florack
TDM Coordinator
jb2@landofsky.org
828.470.0232



Stacy Friesland
Foster Grandparent Program
Manager
stacy@landofsky.org
828.251.6622 (x1132)



Dee Heinmuller
Senior Companion Program
Manager
deeh@landofsky.org
828.251.6622 (x1107)



Pat Hilgendorf
Caregiver Program Associate
patt@landofsky.org
828.645.9189



Nancy Hogan
Project C.A.R.E. Family
Consultant - WNC
nancy@landofsky.org
828.251.7432



Edward Jones
Family Caregiver Specialist
edward@landofsky.org
828.251.6622 (x1122)



Brea Kuykendall
Aging Programs Specialist,
Health Promotion
brea@landofsky.org
828.251.7438



Carol McLimans
Caregiver Program
Associate
carol@landofsky.org
828.230.1403



Kelly Morgan
Senior Companion Caregiver
Program Manager
kelly@landofsky.org
828.251.7426

Area Agency on Aging Staff



Zack Schmitt
Aging Program Specialist,
Contracts
zack@landofsky.org
828.251.6622 (x1114)



Cori Search
LTC Regional Ombudsman
cori@landofsky.org
828.251.6622 (x1112)



Jenna Sharrits
Aging Program Specialist, Vac-
cine Outreach
jenna@landofsky.org
828.251.6622 (x1112)



Donna Thomason
LTC Regional Ombudsma
donna@landofsky.org
828.251.6622 (x1119)



Connecting People to Resources

Land of Sky's Client Services was developed ...

INSpire: Recovery to Careers

Provides community-based peer support services for people reentering the workforce after being discharged from treatment or released from prison. This program covers the 11 most western counties in North Carolina.

Contact: Brandon Manson
Dillon Moss

GO PLACES

Growth Opportunities: Peer Leaders Activating the Community for Employment Success - Introduces and prepares youth and young adults ages 18-24 for the world of work through placement into paid work experiences and on a path to more equitable career opportunities with their peers. This program is focused on three priority regions: Asheville, NC; Cocke County, TN; and Knoxville, TN.

Contact: Gene Ettison

Transitions to Community Living

Provides eligible adults with serious mental illness the opportunity to choose where they live and work. TCL connects people to mental and physical healthcare services and supports that help them maintain a home in their own name, instead of living in a facility.

Contact: Brandon Manson

Healthy Opportunities

Provides NC Medicaid Managed Care clients with eligible services in the areas of transportation and housing. This program covers the 18 most western counties in North Carolina.

Contact: Vicki Jennings

Contact: For questions and inquiries about our Client Services, please contact:



Vicki Jennings
Strategic Initiatives Director
vicki@landofsky.org
828.251.7437



Brandon Manson
Peer Support Programs
Director
brandon@landofsky.org
828.470.8298



Gene Ettison
GO PLACES Director
gene@landofsky.org
828.490.5596

Clients Services Staff



Melissa Berretta
INspire Peer Support
Specialist
melissab@landofsky.org
828.470.0814



Dalton Buckner
HOP Transportation Finance
Specialist
dalton@landofsky.org
828.747.9723



Halston Fisher
TCL Peer Extender
halston@landofsky.org
828.829.6498



Chip Hall
TCL Peer Extender
chip@landofsky.org
828.470.8300



Lindsey Hensley
GO PLACES Project
Coordinator
lindseyh@landofsky.org
980.295.9195



Dillon Moss
INspire Programs Liaison
dillon@landofsky.org
828.490.0588



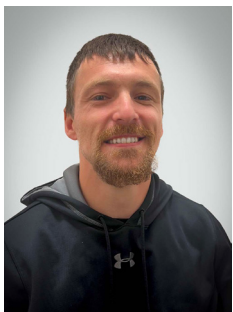
Jerry Pharr
TCL Peer Extender
jerry@landofsky.org
828.470.0615



Jane Pies
HOP Transportation
Specialist
jane@landofsky.org
828.470.0118



Brandi Price
TCL Peer Extender
brandi@landofsky.org
828.470.0713



Antony Sluder
INspire Peer Support
Specialist
antony@landofsky.org
828.490.3609



Buffey Smith
HOP Administrative Support
Specialist
buffey@landofsky.org
828.251.7455



Amanda Von Litoff
INspire Peer Support Specialist
amandavl@landofsky.org
828.222.3344

ADMINISTRATION AND FINANCE

Creative Regional Solutions

Administrative Services:

Provides administrative support to all internal programs and LOS staff.

Contact: Christina Giles

Communications and Website:

Responsible for web design and coordination of LOSRC branding.

Contact: Christina Giles

Board of Delegates:

Provides varied administrative support to Council Board. Works in cooperation and compliance with Council's mission and other policies and procedures as applicable.

Contact: Zia Rifkin

Finance:

Performs accounting and finance functions for LOS staff and Council.

Contact: Patricia Rosenberg

Strategic Initiatives:

Coming Soon

Contact: Vicki Jennings

Contact:

For questions and inquiries about our Administration and Finance menu of services, please contact:



Patricia Rosenberg
Finance Director
patricia@landofsky.org
828.251.7470



Christina Giles
Administration and
Communication Director
christina@landofsky.org
828.251.7431



Vicki Jennings
Strategic Initiatives Director
vicki@landofsky.org
828.251.7437

Administration and Finance Staff



Sherry Christenson
Payroll and Finance
Coordinator
sherry@landofsky.org
828.251.6622 (x1259)



Wanda Clark
Accounting Assistant
wanda@landofsky.org
828.251.6622 (x1170)



Melissa Lindsey
Accounts Payable Clerk
melissal@landofsky.org
828.251.6622 (x1159)



Asha Rado
Administrative Support
Specialist / Finance Specialist
asha@landofsky.org
828.251.6622



Kim Ward
Accounts Receivable Clerk
kimw@landofsky.org
828.251.6622 (x1359)



Phyllis Utley
The Remembrance Project
Program Manager
@landofsky.org



Vacant
Procurement and
Accounting Specialist
@landofsky.org
828.470.0805

LOS Acronyms

AAA	Area Agency on Aging
C.A.R.E.	Caregiver Alternatives to Running on Empty
ECD	Economic & Community Development
FBRMPO	French Broad River MPO
FCSP	Family Caregiver Support Program
FGP	Foster Grandparent Program
GIS	Geographic Information Systems
HCCBG	Home and Community Care Block Grant
HPDP	Health Promotion & Disease Prevention
LTC	Long Term Care
MAWD	Mountain Area Workforce Development

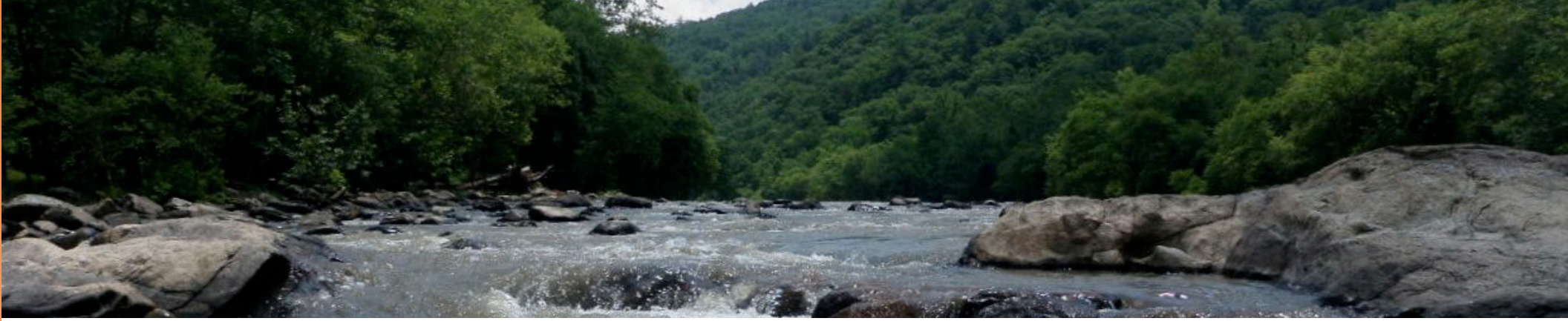
MFP	Money Follows the Person
MPO	Metropolitan Planning Organization
NCDEQ	NC Department of Environmental Quality
NEMT	Non-Emergency Medicaid Transportation
RBI	Regional Brownfields Initiative
RIDE	Ridership Independence for the Disabled
RPO	Rural Planning Organization
SCP	Senior Companion Program
STHL	Senior Tar Heel Legislature
WIA	Workforce Investment Act
WRP	Waste Reduction Partners

*NCDEQ - Employees of NC Department of Environmental Quality

LAND OF SKY

REGIONAL COUNCIL

339 New Leicester Hwy, Suite 140 | Asheville, NC 28806
828.251.6622 | f: 828.251.6353 | landofsky.org



LAND of SKY

REGIONAL COUNCIL

Who We Serve



BOARD of DELEGATES

Creative Regional Solutions

The purpose and objectives of the Board of Delegates are:

- To provide a forum for local leaders to collaborate on issues of regional importance.
- To foster desirable social, cultural, ecological, and economic conditions within the region.
- To provide technical support and consultation in the development of regional plans, comment and coordination concerning applications for state and federal aid for many types of projects and programs having an impact upon the region.
- To promote joint federal, state, and local efforts to provide for the orderly long-term development of the region.

Executive Committee:

Chair - Patrick Fitzsimmons - Town of Weaverville

Vice Chair - Maureen Copelof - City of Brevard

Secretary - Preston Blakely - Town of Fletcher

Treasurer - Matt Wechtel - Madison County

Past Chair - Barbara Volk, City of Hendersonville

County Delegate - Jason Chappell, Transylvania County

Municipal Delegate - Sandra Kilgore, City of Asheville

Minority Representative - Burton Hodges, Transylvania County Transylvania Alliance

Aging / Volunteer Services Delegate - Bob Tomasulo

Member Governments & Members:

Buncombe County - Terri Wells, Tim Love

City of Asheville - Sandra Kilgore, Antanette Mosley

Town of Biltmore Forest - George Gooosmann III, Jonathan Kanipe

Town of Black Mountain - Pam King, Archie Pertiller

Town of Montreat - Blake Mason, Kitty Fouche

Town of Weaverville - Patrick Fitzsimmons, Doug Jackson, Jeff McKenna

Town of Woodfin - Elisabeth Ervin, Sheri Powers, Shannon Tuch

Henderson County - Rebecca McCall, John Mitchell, Christopher Todd

Village of Flat Rock - Barbara Jeter, Pat Christie, David Dethero

Town of Fletcher - Preston Blakely, Mark Biberdorf, Bob Davy

City of Hendersonville - Barbara Volk, Lyndsey Simpson, John Connet

Town of Laurel Park - Deb Bridges, Paul Henson, Carey O’Cain

Town of Mills River - Jeff Young, Daniel Cobb

Member Governments & Council Member:

Madison County - Matt Wechtel, Michael Garrison, Jeremy Hensley, Bill Briggs, Alan Wyatt

Town of Hot Springs - Abigail Norton

Town of Marshall - Nancy Allen, Billie Jean Haynie, Aileen Payne, Forrest Gilliam

Town of Mars Hill - John Chandler, Nathan Bennett

Transylvania County - Jason Chappell, Larry Chapman

City of Brevard - Maureen Copelof, Mac Morrow

Town of Rosman - Brian Shelton, Missy Hendricks

Aging Programs Representative - Bob Tomasulo

Economic Development Representatives:

Buncombe County - Justin Tyler

Henderson County - Brittany Brady

Madison County - Brad Guth

Transylvania County - Burt Hodges

At-Large Members:

Buncombe County - Vacant

Henderson County - John Mitchell

Madison County - Terrence Dolan

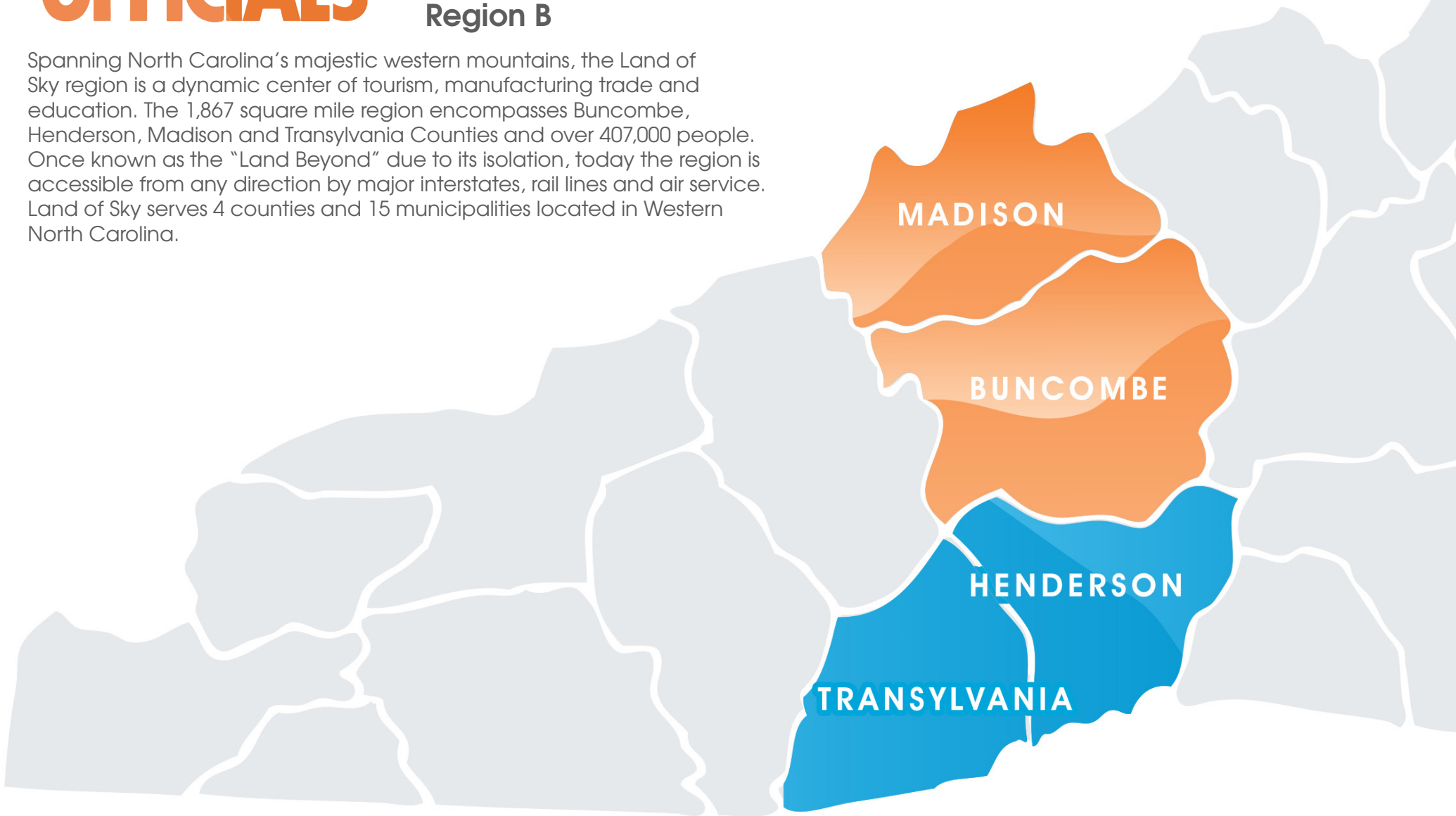
Transylvania County - Vacant



PUBLIC OFFICIALS

Region B

Spanning North Carolina's majestic western mountains, the Land of Sky region is a dynamic center of tourism, manufacturing trade and education. The 1,867 square mile region encompasses Buncombe, Henderson, Madison and Transylvania Counties and over 407,000 people. Once known as the "Land Beyond" due to its isolation, today the region is accessible from any direction by major interstates, rail lines and air service. Land of Sky serves 4 counties and 15 municipalities located in Western North Carolina.



Buncombe County

200 College Street
Asheville, NC 28801
p: 828.250.4100
w: buncombecounty.org



Meeting Schedule: First and third
Tuesday @ 5 pm

Brownie Newman, Chairman

p: 828.243-0107
brownie.newman@
buncombecounty.org

Al Whitesides, Commissioner

p: 828.250.4006
alfred.whitesides@
buncombecounty.org

Amanda Edwards, Commissioner

p: 828.250.4005
amanda.edwards@
buncombecounty.org

Martin Moore, Commissioner

p: 828.250.4010
martin.moore@
buncombecounty.org

Avril Pinder, County Manager

p: 828.250.4100
avril.pinder@buncombecounty.org

Jasmine Beach-Ferrara, Commissioner

p: 828.250.4004
jasmine.beach-ferrara@
buncombecounty.org

Terri Wells, Commissioner

p: 828.250.4008
terri.wells@
buncombecounty.org
*LOS Board Member

Parker Sloan, Commissioner

p: 828.250.4007
parker.sloan@
buncombecounty.org

Lamar Joyner, County Clerk

p: 828.250.4105
lamar.joyner@
buncombecounty.org

City of Asheville

70 Court Plaza, PO Box 7148
Asheville, NC 28802
p: 828.251.1122
w: ashevillenc.gov
e: info@ashevillenc.gov



Meeting Schedule: Second and fourth
Tuesday @ 5 pm at Council Chambers

Esther Manheimer, Mayor

p: 828.259.5600
esthermanheimer@avlcouncil.com

Maggie Ullman, Councilwoman

maggiuellman@avlcouncil.com

Antanette Mosley, Councilwoman

antanettesmosley@avlcouncil.com
*LOS Board Member

Sage Turner, Councilwoman

sageturner@avlcouncil.com

Debra Campbell, City Manager

p: 828.259.5604
dcampbell@ashevillenc.gov

Maggie Burleson, City Clerk

p: 828.259.5601
mburleson@ashevillenc.gov

Sandra Kilgore, Vice-Mayor

sandrakilgore@avlcouncil.com
*LOS Board Member

Sheneika Smith, Councilwoman

sheneikasmith@avlcouncil.com

Kim Roney, Councilwoman

kimroney@avlcouncil.com

Town of Biltmore Forest

355 Vanderbilt Road
Biltmore Forest, NC 28803
p: 828.274.0824
w: biltmoreforest.org
e: townhall@biltmoreforest.org

Meeting Schedule: Second Tuesday
@ 4:30 pm

George Goosmann, III, Mayor

p: 828.274.0825
gfg3rd@icloud.com
*LOS Board Member

E. Glenn Kelly, Councilman

p: 828.274.3727
townhall@biltmoreforest.org

Jonathan Kanipe, Town Manager

p: 828.274.0824
jkanipe@biltmoreforest.org
*LOS Board Member



Doris P. Loomis, Mayor Pro Tem

p: 828.274.0824
townhall@biltmoreforest.org

Fran Cogburn, Councilwoman

p: 828.274.3727
fgcogburn@charter.net

Town of Black Mountain

160 Midland Avenue
Black Mountain, NC 28711
p: 828.419.9300
w: townofblackmountain.org
e: TownManager@
townofblackmountain.org

Meeting Schedule: Second Monday
@ 6 pm

C. Michael Sobol, Mayor

p: 828.777.0881
mike.sobol@tobm.org

Alice Berry, Council Member

p: 828.419.0734
alice.berry@tobm.org

Pam King, Council Member

p: 828.989.3269
pamking715@gmail.com
*LOS Board Member

Josh Harrold, Town Manager

p: 828.419.9300 x311
josh.harrold@
townofblackmountain.org

Savannah Parrish, Town Clerk

p: 828.419.9300 x310
savannah.parrish@
townofblackmountain.org



Archie Pertiller, Jr, Vice-Mayor

p: 828.337.3279
archie.pertiller@yahoo.com
*LOS Board Member

Doug Hay, Council Member

p: 828.419.0886
doughay.b,t@gmail.com

Bill Christy, Council Member

p: 828.669.0884
bill.christy@tobm.org

Town of Montreat

PO Box 423
Montreat, NC 28757
p: 828.669.8002
w: townofmontreat.org
e: townadmin@townofmontreat.org

Meeting Schedule: Second Thursday
@ 7 pm



Tim Helms, Mayor

p: 828.669.3852
thelms@townofmontreat.org

Kitty Fouche, Commissioner

p: 828.357.8488
kfouche@townofmontreat.org
* LOS Board Member

Mason Blake, Commissioner

p: 321.720.8989
mblake@townofmontreat.org
*LOS Board Member

Savannah Parrish, Town Manager

p: 828.669.8002 X 3050
sparrish@townofmontreat.org

Angie Murphy, Town Clerk

p: 828.669.8002 X 301
amurphy@townofmontreat.org

Kent Otto, Mayor Pro Tem

p: 919.801.8618
kotto@townofmontreat.org

Jane Alexander, Commissioner

p: 252.714.4484
jalexander@townofmontreat.org

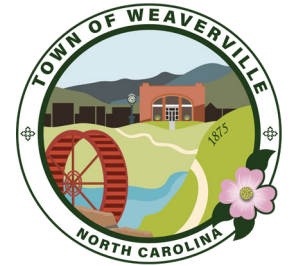
Tom Widmer, Commissioner

p: 804.441.3679
twidmer@townofmontreat.org

Town of Weaverville

30 South Main Street
Weaverville, NC 28787
p: 828.645.7116
w: weavervillenc.org

Meeting Schedule: Third Monday
@ 7 pm



Patrick Fitzsimmons, Mayor

p: 828.777.2495
pfitzsimmons@weavervillenc.org
*LOS Board Member

Peter McGuire, Council Member

p: 828.776.7380
pmcguire@weavervillenc.org

Doug Jackson, Council Member

p: 828.645.5894
djackson@weavervillenc.org
*LOS Board Member

Michele Wood, Council Member

p: 214.923.8083
mwood@weavervillenc.org

Catherine Cordell, Vice-Mayor

p: 828.776.7380
ccordell@weavervillenc.org

Dee Lawrence, Council Member

p: 828.776.7380
dlawrence@weavervillenc.org

John Chase, Council Member

p: 828.337.3366
jchase@weavervillenc.org

Selena Coffey, Town Manager

p: 828.645.7116 X 224
scoffey@weavervillenc.org

Town of Woodfin

90 Elk Mountain Road
Woodfin, NC 28804
p: 828.253.4887
p: woodfin-nc.gov



Meeting Schedule: Third Tuesday @
5:00 pm

Jim McAllister, Mayor

p: 828.253.4887
JMcAllister@woodfin-nc.gov

Elisabeth Ervin, Vice-Mayor

p: 828.253.4887
ellsabethervin@woodfin-nc.gov
*LOS Board Member

Philip Cohen, Council Member

p: 828.253.4887
pcohen@Woodfin-NC.gov

Eric Edgerton, Council Member

p: 828.253.4887
EEdgerton@woodfin-nc.gov

Johanna Young, Council Member

p: 828.253.4887
jhyoung@woodfin-nc.gov

Hazel Thornton, Council Member

p: 828.253.4887
HThornton@woodfin-nc.gov

Ken Kahn, Council Member

p: 828.253.4887
kkahn@Woodfin-NC.gov

Shannon Tuch, Town Manager

p: 828.253.4887, Ext. 1007
stuch@woodfin-nc.gov
*LOS Board Member

Gena Powers, Town Clerk

p: 828.253.4887, EXT.1001
gpowers@woodfin-nc.gov



Henderson County

1 Historic Courthouse Square
Hendersonville, NC 28792
p: 828.697.4808
w: hendersoncountync.org



Meeting Schedule: First Monday @
5:30 pm and third Wednesday @
9:30 am

Rebecca McCall, Chairman

p: 828.697.4808
rmccall@hendersoncountync.org
*LOS Board Member

David Hill, Commissioner

p: 828.697.4808
davidhill@hendersoncountync.org

William Lapsley, Commissioner

p: 828.697.4808
wlapsley@hendersoncountync.org

John Mitchekk, County Manager

p: 828.697.4809
jmitchell@hendersoncountync.gov
*LOS Board Member

Denisa A. Lauffer, Clerk to Board

p: 828.697.4808
dlauffer@hendersoncountync.gov

Mike Edney, Vice-Chair

p: 828.697.4808
jmedney@hendersoncountync.org

Daniel Andreotta, Commissioner

p: 828.697.4808
dandreotta@
hendersoncountync.org

Village of Flat Rock

110 Village Center Drive
Flat Rock, NC 28731
PO Box 1288, Flat Rock, NC 28731
p: 828.697.8100
w: villageofflatrock.org



Meeting Schedule: Second Thursday
@ 9:30 am

Nick Weedman, Mayor

p: 828.697.8100
mayor@villageofflatrock.org

Tom Carpenter, Council Member

p: 828.697.8100
tomcarpenter@villageofflatrock.org

Susan Gregory, Council Member

p: 828.697.8100
susangregory@villageofflatrock.org

Matt Toner, Council Member

p: 828.697.8100
matt.toner@villageofflatrock.org

Pat Christie, Village Administrator

p: 828.697.8100
administrator@
villageofflatrock.org
*LOS Board Member

Anne Coletta, Vice-Mayor

p: 828.697.8100
annecoletta@villageofflatrock.org

David Dethero, Council Member

p: 828.697.8100
daviddethero@villageofflatrock.org
*LOS Board Member

Barbara Jeter, Council Member

p: 828.697.8100
barbara.jeter@villageofflatrock.org
*LOS Board Member

Town of Fletcher

300 Old Cane Creek Road
Fletcher, NC 28732
p: 828.687.3985
w: fletchernc.org
e: info@fletchernc.org

Meeting Schedule: Second
Monday @ 6 pm



Preston Blakely, Mayor

p: 828.215.7706
p.blakely@fletchernc.org
*LOS Board Member

Sheila Franklin, Councilwoman

p: 828.684.5676
s.franklin@fletchernc.org

Trevor C. Lance, Councilwoman

p: 828.338.9338
TrevorCLance@gmail.com

Mark Biberdorf, Town Manager

p: 828.687.3985
m.biberdorf@fletchernc.org
*LOS Council Member

Bob Davy, Mayor Pro-Tem

p: 828.687.0313
bdnole78@gmail.com
*LOS Council Member

Keith Reed, Councilman

p: 828.367.7130
k.reed@fletchernc.org

Christine Thompson, Town Clerk

p: 828.687.3985
c.thompson@fletchernc.org

City of Hendersonville

145 Fifth Avenue E
Hendersonville, NC 28792
p: 828.697.3000
w: hendersonvillenc.gov

Meeting Schedule: First Thursday
@ 5:45 pm



Barbara Volk, Mayor

p: 828.697.3000
bvolk@hvlnc.gov
*LOS Board Member

Jerry Smith, Council Member

p: 828.243.9123
jerrysmith@hvlnc.gov

Debbie Roundtree, Council Member

p: 828.290.6580
droundtree@hvlnc.gov

John Connet, City Manager

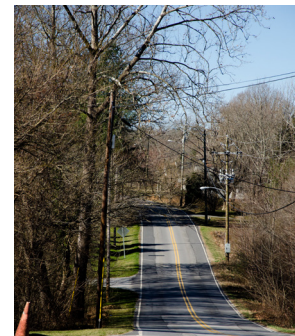
p: 828.697.3005
jconnet@hvlnc.gov
*LOS Board Member

Lyndsey Simpson, Mayor Pro Tem

p: 828.513.8667
lsimpson@hvlnc.gov
*LOS Board Member

Dr. Jennifer Hensley, Council Member

p: 828.606.3703
jhensley@hvlnc.gov



Town of Laurel Park

441 White Pine Drive
Laurel Park, NC 28739
p: 828.693.4840
w: laurelpark.org

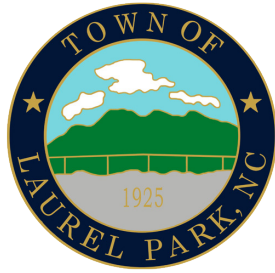
Meeting Schedule: Third Tuesday @
9:30 am

Carey O’Cain, Mayor
p: 828.693.4840
mayor@laurelpark.org
*LOS Board Member

Debra Hinson Bridges, Commissioner
p: 828.693.4840
dbridges@laurelpark.org
*LOS Board Member

Kristin Dunn, Commissioner
p: 828.693.4840
kdunn@laurelpark.org

Alex Carmichael, Town Manager
p: 828.693.4840
townmanager@laurelpark.org



Paul Hansen, Mayor Pro Tem
p: 828.693.4840
phansen@laurelpark.org
*LOS Board Member

George Banta, Commissioner
p: 828.693.4840
gbanta@laurelpark.org

Tamara Amin, Clerk
p: 828.693.4840
tamin@laurelpark.org

Town of Mills River

124 Town Center Drive
Mills River, NC 28759
p: 828.890.2901
w: millsriver.org

Meeting Schedule: Second and
Forth Thursday @ 6:30 pm

Shanon Gonce, Mayor
p: 828.890.2901
shanon.gonce@millsriver.org

Sandra Goode, Council Member
p: 828.606.1747
sandra.goode@millsriver.org

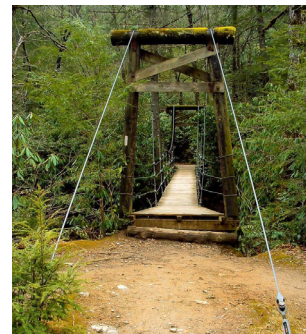
James Cantrell, Council Member
p: 828.890.2901
james.cantrell@millsriver.org



Jeff Young, Mayor Pro Tem
p: 828.606.3480
jeff.young@millsriver.org
*LOS Board Member

**Chae Davis, At-Large Council
Member**
p: 828.606.4294
Chae.Davis@millsriver.org

Daniel Cobb, Town Manager
p: 828.890.2901
Daniel.cobb@millsriver.org
* LOS Board Member





Madison County

PO Box 579
Marshall, NC 28753
p: 828.649.2854
w: madisoncountync.org
e: admin@madisoncountync.org

Meeting Schedule: Second Tuesday @ 7 pm



Matthew Wechtel, Chair

p: 828.649.2854
mwechtel@madisoncountync.org
*LOS Board Member

Bill Briggs, Commissioner

p: 828.649.2854
bbriggs@madisoncountync.org
*LOS Board Member

Alan Wyatt, Commissioner

p: 828.649.2854
awyatt@madisoncountync.org
*LOS Board Member

Michael Garrison, Vice-Chair

p: 828.649.2854
michaelgarrison@madisoncountync.org
*LOS Board Member

Jeremy Hensley, Commissioner

p: 828.649.2854
jeremyhensley@madisoncountync.org
*LOS Board Member

Town of Hot Springs

PO Box 218
Hot Springs, NC 28743
p: 828.622.7591
w: townofhotsprings.org

Meeting Schedule: First Monday @ 7 pm



Abigail Norton, Mayor

p: 828.622.7591
townofhotsprings@frontier.com
*LOS Board Member

Jimmy Moore, Alderman

p: 828.622.7591
townofhotsprings@frontier.com

Nancy Thomas, Town Clerk

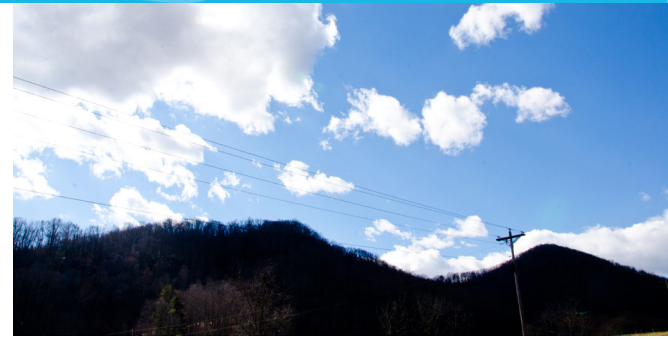
p: 828.622.7591
townofhotsprings@frontier.com

Jeanne Caldwell Gentry, Alderwoman

p: 828.622.7591
townofhotsprings@frontier.com

Vaughn Barnett, Alderman

p: 828.622.7591
townofhotsprings@frontier.com



Town of Marshall

180 South Main Street
Marshall, NC 28753
p: 828.649.2031
w: townofmarshall.org

Meeting Schedule: Third Monday
@ 6 pm

Aaron Haynie, Mayor

p: 828.689.3031
mayor@townofmarshall.org

Billie Jean Haynie, Alderman

p: 828.689.3031
*LOS Council Member

Dr. Christiaan Ramsey, Alderman

p: 828.689.3031

Forrest Gilliam, Town Clerk & Administrator

p: 828.689.3031
fgilliam@townofmarshall.org
*LOS Board Member



Aileen Payne, Mayor Pro Tem

p: 828.689.3031
*LOS Board Member

Laura Ponder-Smith, Alderman

p: 828.689.3031

Thomas Jablonski, Alderman

p: 828.689.3031

Michelle Massey, Deputy Town Clerk

p: 828.689.3031
mmassey@townofmarshall.org

Town of Mars Hill

280 North Main Street
Mars Hill, NC 28754
p: 828.689.2301
w: townofmarshill.org

Meeting Schedule: First Monday @
6 pm

John Chandler, Mayor

p: 828.689.2301
jlc mayor@yahoo.com
*LOS Board Member

Larry Davis, Alderman

p: 828.689.2301

Robert Zink, Alderman

p: 828.689.2301

Nathan Bennett, Town Manager

p: 828.689.2301
nbennett@townofmarshill.org
*LOS Board Member



Nicholas Honeycutt, Vice-Mayor

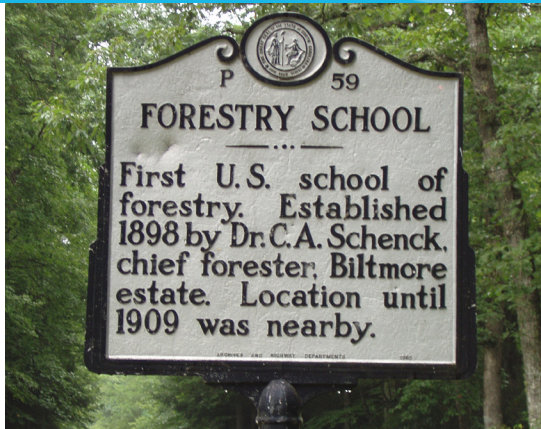
p: 828.689.2301

Stuart Jolley, Alderman

p: 828.689.2301

Stuart Jolley, Town Clerk

p: 828.689.2301



Transylvania County

101 S Broad Street
Brevard, NC 28712
p: 828.884.3100
w: transylvaniacounty.org



Meeting Schedule: Second Tuesday
@ 9 am and fourth Mondays @ 7 pm

Jason Chappell, Chair

p: 828.884.3100
jason.chappell@transylvaniacounty.org
*LOS Board Member

Jake Dalton, Vice-Chair

p: 828.884.3100
jake.dalton@transylvaniacounty.org

Emmett Casciato, Commissioner

p: 828.884.3100
emmett.casciato@transylvaniacounty.org

Larry Chapman, Commissioner

p: 828.884.3100
larry.chapman@transylvaniacounty.org
*LOS Board Member

Teresa McCall, Commissioner

p: 828.884.3100
teresa.mccall@transylvaniacounty.org

Jaime Laughter, County Manager

p: 828.884.3100
jaime.laughter@transylvaniacounty.org

Trisha Hogan, County Clerk

p: 828.884.3100
trisha.hogan@transylvaniacounty.org

City of Brevard

95 West Main Street
Brevard, NC 28712
p: 828.885.5600
w: cityofbrevard.com

Meeting Schedule: First and third
Mondays @ 5:30 pm in the Council
Chamber

Maureen Copelof, Mayor

p: 828.885.5613
maureen.copelof@cityofbrevard.
com
*LOS Board Member

Aaron Baker, Councilman

p: 828.553.9648
aaron.baker@cityofbrevard.com

Geraldine Dinkins, Councilman

p: 828.884.2200
geraldine.dinkins@
cityofbrevard.com

Wilson Hooper, City Manager

p: 828.885.5602
Wilson.Hooper@cityofbrevard.com

Denise Hodsdon, City Clerk

p: 828.885.5614
denise.hodsdon@cityofbrevard.
com



Gary Daniel, Mayor Pro Tem

p: 828.508.6918
gary.daniel@cityofbrevard.com

Maurice Jones, Councilman

p: 828.883.3200
maurice.jones@
cityofbrevard.com

Mac Morrow, Councilman

p: 828.885.8444
mac.morrow@cityofbrevard.com
*LOS Board Member

Town of Rosman:

6 Main Street
Rosman, NC 28772
p: 828.884.6859
w: transylvaniacounty.org/
town-of-rosman
e: rosmantown@comporium.net

Meeting Schedule: Second Tues-
day @ 6 pm

Brian Shelton, Mayor

p: 828.884.6859
rosmantown@comporium.net
*LOS Board Member

Larry Bullock, Alderman

p: 828.884.6859
rosmantown@comporium.net

Jared Crowe, Alderman

p: 828.884.6859
rosmantown@comporium.net

Angela Woodson, Town Clerk

p: 828.884.6859
rosmantown@comporium.net



Tricia Hendricks, Mayor Pro- Tem

p: 828.884.6859
rosmantown@comporium.net

Mark Miller, Alderman

p: 828.884.6859
rosmantown@comporium.net

Deedra Shelton, Alderman

p: 828.884.6859
rosmantown@comporium.net

NORTH CAROLINA REGIONS

Lead Regional Organizations

North Carolina is served by 16 regional councils in a broad range of services to local governments including but not limited to: community & economic development, area agencies on aging, volunteerism, workforce development, state & federal program management, planning & GIS mapping services, grant writing, regional collaboration and partnership building. For more information about NC Regional Councils visit www.ncregions.org.

A Southwestern Commission

125 Bonnie Lane, Sylva, NC 28779
p: 828.586.1962
w: regiona.org

B Land of Sky Regional Council

339 New Leicester Hwy. Ste 140, Asheville, NC 28806
p: 828.251.6622
w: landofsky.org

C Foothills Regional Commission

111 West Court Street, Rutherfordton, NC 28139
p: 828.287.2281
w: foothillsregion.org

D High Country Council of Governments

468 New Market Blvd., Boone, NC 28607
p: 828.265.5434
w: hccog.org

E Western Piedmont Council of Governments

1880 2nd Avenue, NW, Hickory, NC 28601
p: 828.322.9191
w: wpcog.org

F Centralina Regional Council

10735 David Taylor Drive, Suite 250, Charlotte, NC 28262
p: 704.372.2416
w: centralina.org

G Piedmont Triad Regional Council

1398 Carrollton Crossing Drive, Kernersville, NC 27284
p: 336.904.0300
w: ptrc.org

J Central Pines Council of Governments

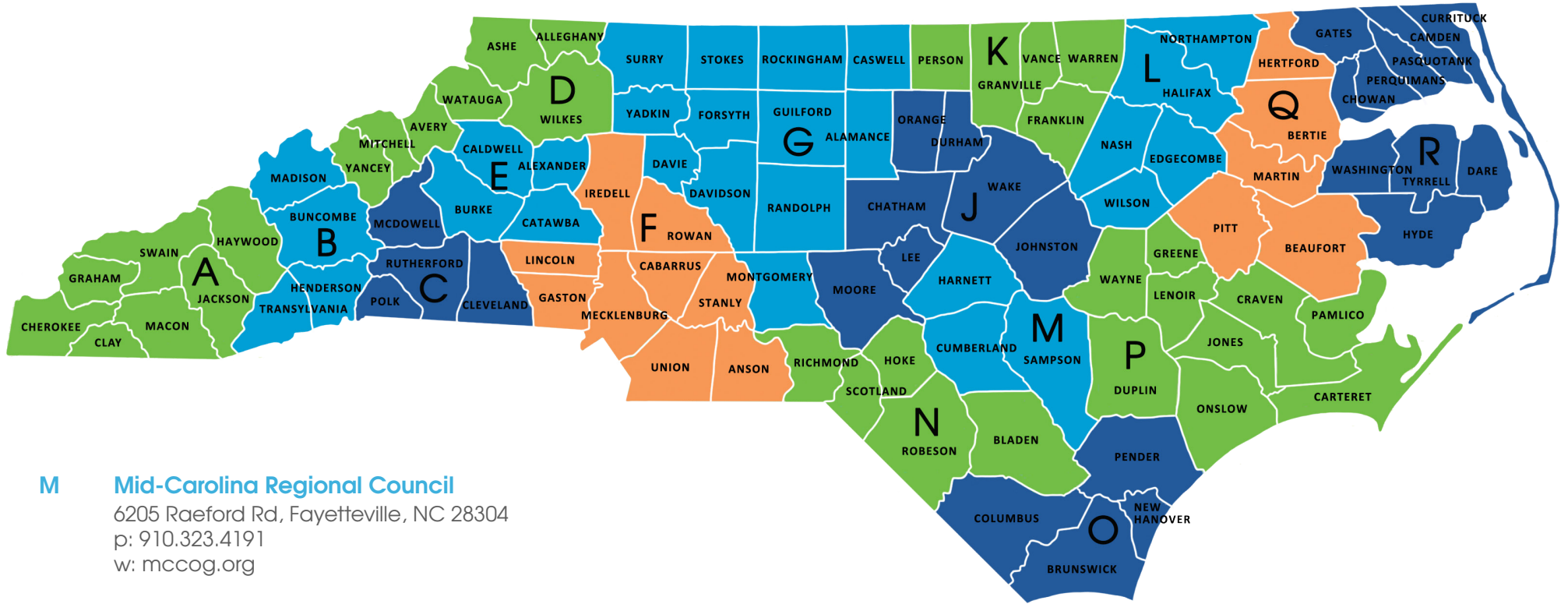
4307 Emperor Blvd., Suite 110, Durham, NC 27701
p: 919.549.0551
w: centralpinesnc.gov

K Kerr-Tar Regional Council of Governments

1724 Graham Avenue, Henderson, NC 27536
p: 252.436.2040
w: kerrtarcog.org

L Upper Coastal Plains Council of Governments

121 W. Nash Street, Wilson, NC 27893
p: 252.234.5952
w: ucpcog.org



M **Mid-Carolina Regional Council**
 6205 Raeford Rd, Fayetteville, NC 28304
 p: 910.323.4191
 w: mccog.org

N **Lumber River Council of Governments**
 30 C.J. Walker Road, Pembroke, NC 28372
 p: 910.618.5533
 w: lumberrivercog.org

O **Cape Fear Council of Governments**
 1480 Harbour Drive, Wilmington, NC 28401
 p: 910.395.4553
 w: capefearcog.org

P **Eastern Carolina Council**
 233 Middle Street, Suite 300, New Bern, NC 28563
 p: 252.638.3185 x3001
 w: eccog.org

Q **Mid-East Commission**
 1502 N. Market Street, Suite A, Washington, NC 27889
 p: 252.946.8043
 w:

R **Albemarle Commission**
 512 South Church Street, Hertford, NC 27944
 p: 252.426.5753
 w: albemarlecommission.org



**LAND
OF SKY**
REGIONAL COUNCIL

339 New Leicester Hwy, Suite 140 | Asheville, NC 28806
828.251.6622 | f: 828.251.6353 | landofsky.org