



**Western North Carolina  
Livable Community Initiative  
Vision Statement**

# Background

In June 2009, the Partnership for Sustainable Communities was formed by the U.S. Department of Housing and Urban Development (HUD), the U.S. Department of Transportation (DOT), and the U.S. Environmental Protection Agency (EPA). Under guidance from the Obama Administration, these agencies have pledged to ensure that housing and transportation goals are met while protecting the environment and promoting quality economic development.

Following the creation of the partnership, federal agency representatives for the North Carolina region approached local officials in the Asheville area to receive community input on the emerging federal Sustainable Community Initiative (SCI). Meetings were held in late 2009 and early 2010 to provide input and discuss how the Asheville region might prepare itself for inclusion in this new federal effort.

Several local and regional organizations have continued to work together to prepare for anticipated new and significant funding opportunities. The group has maintained communication with regional officials from HUD, DOT, and EPA.

One initial opportunity under the SCI is a HUD regional planning and implementation grant that was appropriated in their 2010 budget. It is expected that \$100 million in funding will be made available nationally in May-June 2010.



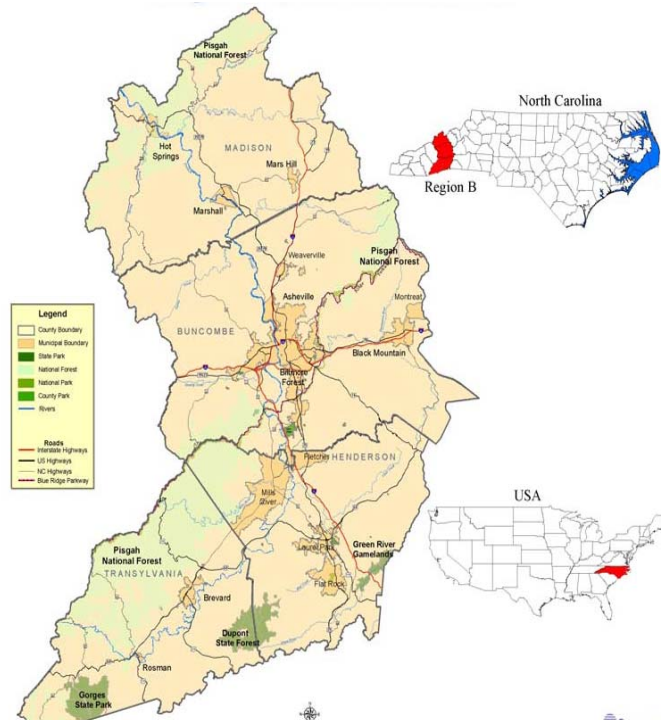
## ***Local Response to Federal Initiative***

# Overview

The local governments of Region B in Western North Carolina (Buncombe, Henderson, Madison, Transylvania) have engaged in economic development and comprehensive planning for over 40 years. The Asheville region itself has several current planning processes already in place.

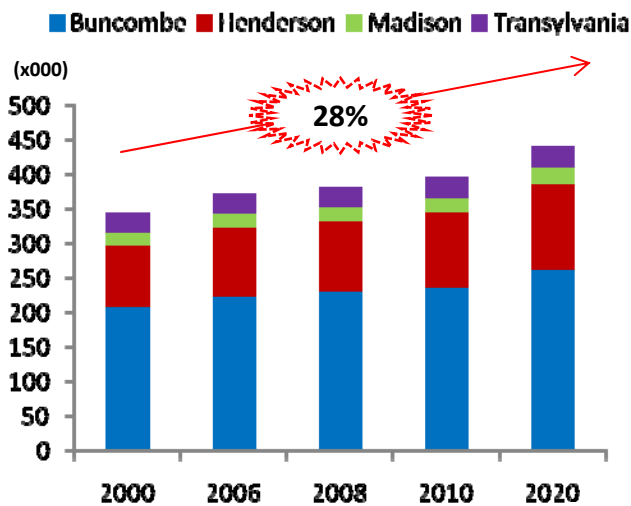
Community leaders now have the opportunity to unify these plans under an integrated regional sustainable development initiative. The efforts will focus on the symbolic and literal arteries of the region: the French Broad River and Interstate transportation corridors.

## Map of Region B



Map by Land-of-Sky Regional Council

## Population 2000 - 2020



US Census Projections (2008 Data)

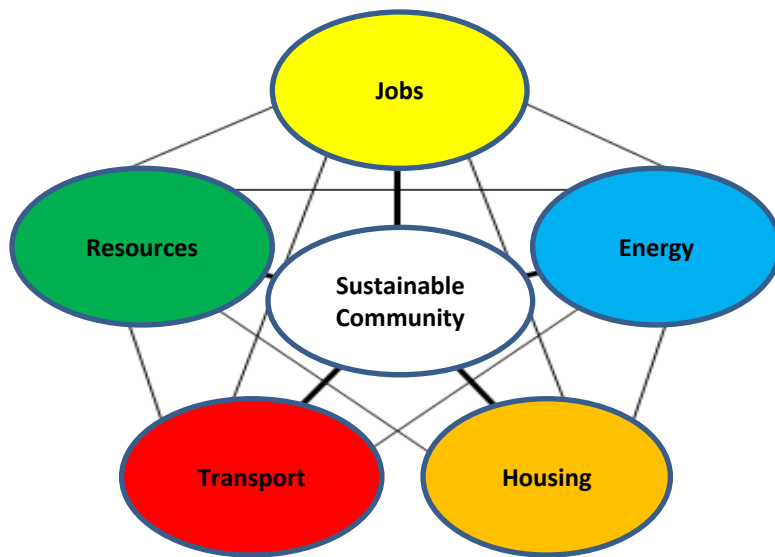
The region has seen tremendous growth in population and resource use, and it is estimated that an additional 45,000 people will in-migrate over the next 10 years. Future development must consider the impact on community, economy and environment.

Principles of sustainable community development and quality growth can be applied to realize “triple bottom line” results without excessive regulation.

# Strategy and Results

The WNC Livable Communities Initiative seeks to implement a series of local and regional projects along the French Broad River Valley and interstate transit corridors, integrating *housing, transportation, energy, natural resources* and *job creation* initiatives.

## Local Livability Principles



## Federal Livability Principles

1. More transportation choices
2. Equitable, affordable housing
3. Enhance economic competitiveness
4. Support communities
5. Value neighborhoods
6. Coordinate and leverage federal support

## Results

### Community Development

- Unprecedented collaboration and improved quality of life

### Economic Development

- Quality development rooted in 'place', local strengths, and resiliency

### Environmental Development

- Stewarding resources and healing natural systems

***Aligned with Federal sustainability principles ...  
Based on the needs of WNC***

# Areas of Implementation

## Jobs

Sustainable employment options

## Housing

Affordable, efficient homes

## Transport

Clean, efficient, affordable alternatives

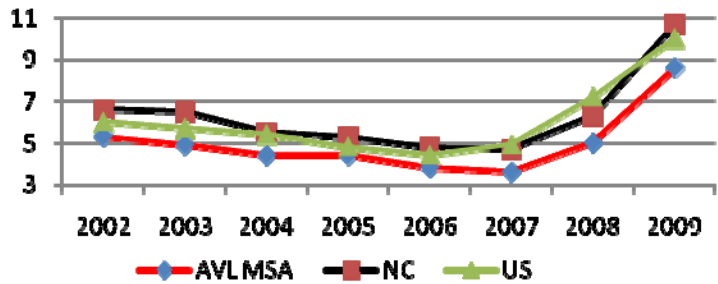
## Energy

Local, renewable sources

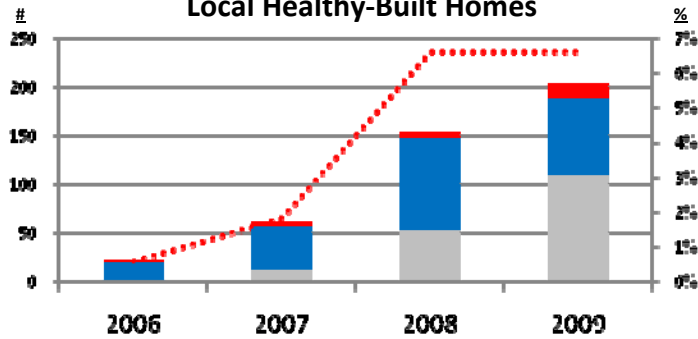
## Resources

Air, water, food, land, and forests

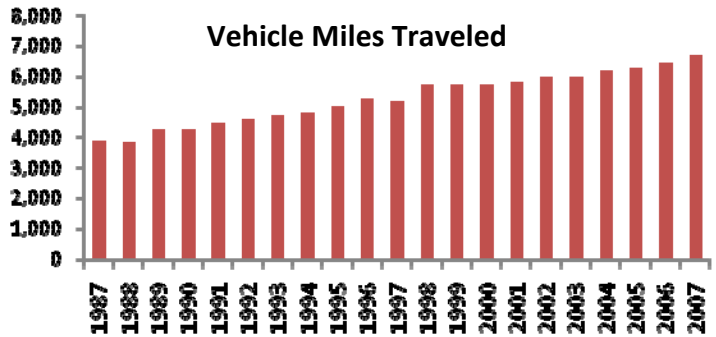
Unemployment Rate



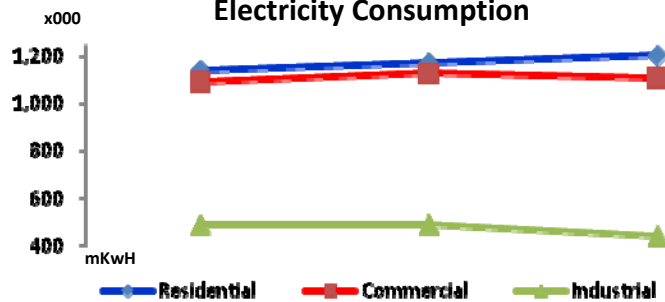
Local Healthy-Built Homes



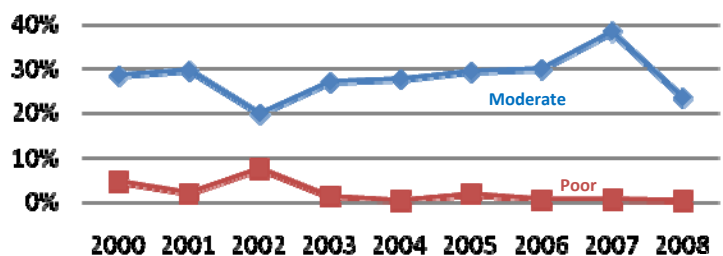
Vehicle Miles Traveled



Electricity Consumption



% Days Air Quality 'Moderate or Worse'



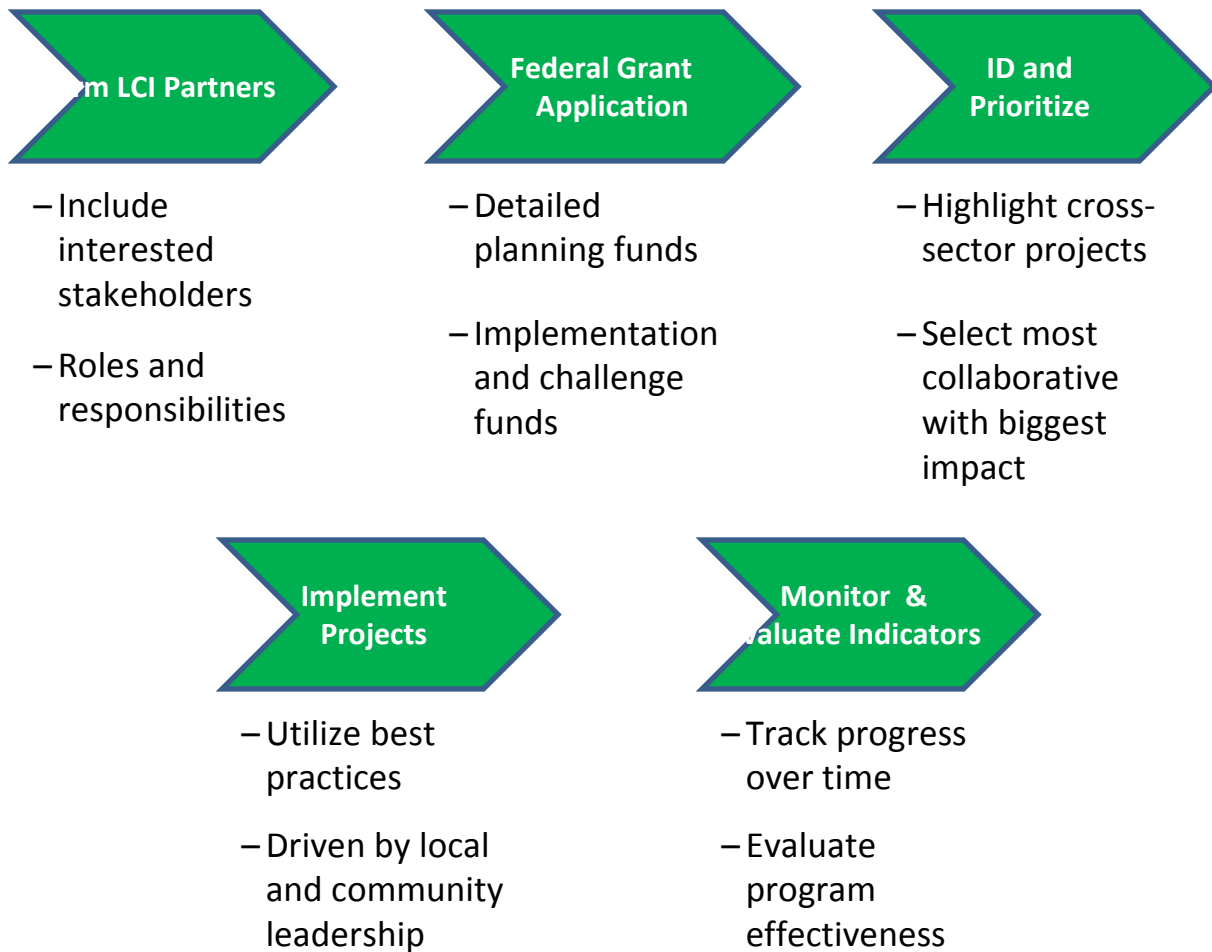
Community Indicators Help Track Progress and Results

# Timeline & Next Steps

## Next Steps



## Actions



***Continues Successful Local History  
Of Cross-Sector Collaboration***